

OWNER'S DEDICATION

We, Burch Properties, Inc., a Maryland Corporation, by T. Raymond Burch, President, and John R. Burch, Secretary, Lester M. Lewis, unmarried, and James T. Harner and No I. Harner, his wife, owners of the property shown hereon and described in the Engineer's Certificate, hereby adopt this plan of subdivision, establish the minimum building restriction lines, dedicate the streets and park to public use and dedicate the easements as shown hereon to public use for the construction, reconstruction, maintenance and operation of sanitary and storm sewers.

There are no suits of action, leases, liens or trusts on the property included in this plan of subdivision except a certain Mortgage and the parties in interest thereto have below indicated their assent.

APRIL 22, 1952 BURCH PROPERTIES, INC.

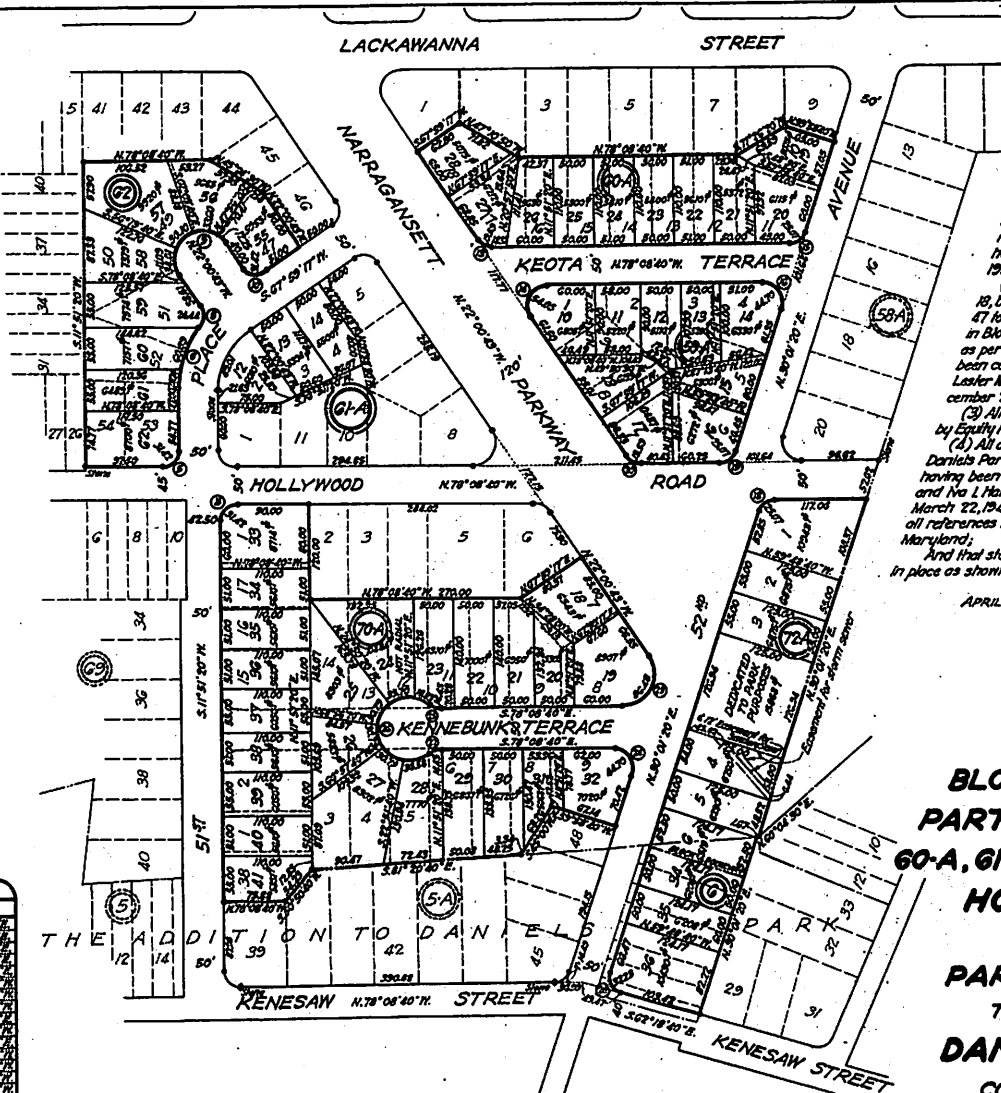
Attest: T. Raymond Burch, President; John R. Burch, Secretary; Lester M. Lewis, James T. Harner, No I. Harner, witnesses.

We assent to this plan of subdivision: Burch Properties, Inc., Mortgagee

Attest: John R. Burch, Secretary; T. Raymond Burch, President



Table with 6 columns: NO, RADIUS, Δ, ARC, CHORD, BEARING. It contains 20 rows of numerical data for curve calculations.



ENGINEER'S CERTIFICATE

I hereby certify that the plan shown hereon is correct, that it is a subdivision of the following: (1) All of Lots 5 to 9, both inclusive, in Block 59-A, Lot 7 in Block 70-A, Parcel A in Block 72, Hollywood, as per plat recorded in Plat Book N7W-18 of folio 84, and Lot 38 in Block 5-A, The Addition to Daniels Park, as per plat recorded in Plat Book N7W-20 of folio 38, said lots having been among the lands conveyed by the following: (a) Eshta Middleworth, widow, to Burch Properties, Inc., by deed dated June 21, 1949 and recorded June 23, 1949 in Liber 1185 of folio 255, and (b) Andrew A. Matherstead and Alice W. Matherstead, his wife, to Burch Properties, Inc., by deed dated January 3, 1952 and recorded January 4, 1952 in Liber 1451 of folio 315; (2) All of Lots 1 to 4, both inclusive, in Block 59-A, Lots 10 to 18, both inclusive, in Block 60-A, Lots 2, 3 and 4 in Block 61-A, Lots 47 to 54, both inclusive, in Block 62, Lots 1 and 2 to 17, both inclusive, in Block 70-A and Lots 1 to 9, both inclusive, in Block 71-A, Hollywood, as per plat recorded in Plat Book N7W-18 of folio 84, said lots having been conveyed by Burch Properties, Inc., a Maryland Corporation, to Lester M. Lewis, by deed dated December 27, 1951 and recorded December 28, 1951 in Liber 1418 of folio 473; (3) All of the lands occupied in abandonment of Kennebunk Terrace by Equity Proceedings A-4946 and (4) All of Lots 2 to 28, both inclusive, in Block 6, The Addition to Daniels Park, as per plat recorded in Plat Book BDS-1 of folio 24, said lots having been conveyed by Catherine Smith, unmarried, to James T. Harner and No I. Harner, his wife, by deed dated March 21, 1949 and recorded March 22, 1949 in Liber 1108 of folio 310, all references made being to the Land Records of Prince Georges County, Maryland; And that stones indicated thus: σ, and iron pipes indicated thus: ρ, are in place as shown.

APRIL 22, 1952

Signature of Ben Dyer, Registered Professional Engineer and Land Surveyor.

BLOCK 59-A AND PARTS OF BLOCKS 60-A, 61-A, 62, 70-A AND 72-A HOLLYWOOD AND PART OF BLOCK 6 THE ADDITION TO DANIELS PARK COLLEGE PARK

PRINCE GEORGES COUNTY, MARYLAND SCALE: 1" = 100' MARCH, 1952

Note: Lots 12, 13 and 14, Block 61-A, have been made a part of this plot to correct errors in lot dimensions given for original lots 2, 3 and 4.

MARYLAND-NATIONAL CAPITAL PARK & PLANNING COMMISSION APPROVED: MAY 3, 1952 WASHINGTON SUBURBAN SANITARY COMMISSION APPROVED: MAY 3, 1952

BEN DYER REGISTERED CIVIL ENGINEER AND LAND SURVEYOR HYATTSVILLE, MD.

**OWNER'S DEDICATION**

We, the undersigned, a Maryland Corporation, by T. Raymond Smith, President, and John R. Smith, Secretary, L. Harmon, his wife, owners of the property shown hereon and described in the Engineer's Certificate, heretofore filed in this office, do hereby dedicate the streets and park to public use and dedicate the easements as shown hereon to public use for the construction, reconstruction, maintenance and operation of sanitary and storm sewers. There are no suits of section, leases, liens or trusts on the property included in this plan of subdivision except a certain Mortgage and the parties in interest hereto have duly recorded their assent.

April 22, 1952 BUREAU PROPERTIES, INC.

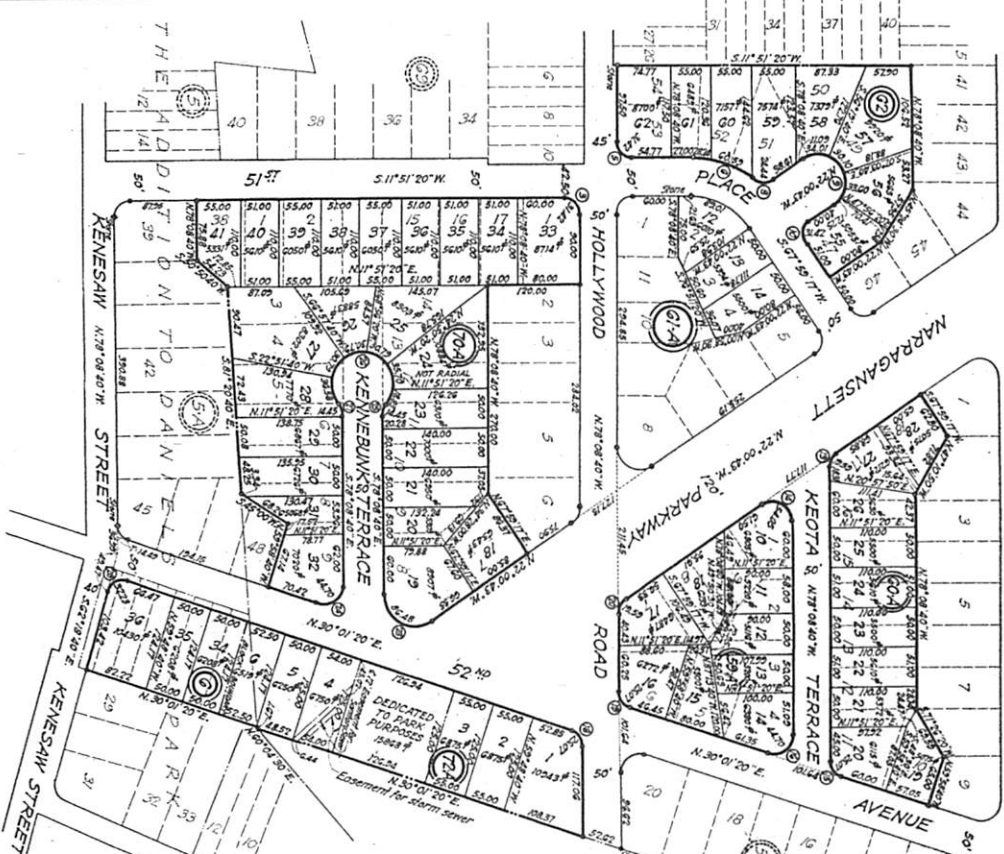
*T. Raymond Smith*  
*John R. Smith*  
*L. Harmon*  
*James T. Harmon*  
*James T. Harmon*  
*James T. Harmon*

Witness  
*John R. Smith*  
*James T. Harmon*

My assent to this plan of subdivision:  
 BUREAU PROPERTIES, INC. Mortgage  
*John R. Smith*  
*James T. Harmon*

**CURVE DATA**

NO	RADIUS	Δ	ARC	TANG	CHORD	BEARING
1	100.00	30.00	31.42	15.71	31.85	N. 52.91° E.
2	100.00	30.00	31.42	15.71	31.85	N. 52.91° E.
3	100.00	30.00	31.42	15.71	31.85	N. 52.91° E.
4	100.00	30.00	31.42	15.71	31.85	N. 52.91° E.
5	100.00	30.00	31.42	15.71	31.85	N. 52.91° E.
6	100.00	30.00	31.42	15.71	31.85	N. 52.91° E.
7	100.00	30.00	31.42	15.71	31.85	N. 52.91° E.
8	100.00	30.00	31.42	15.71	31.85	N. 52.91° E.
9	100.00	30.00	31.42	15.71	31.85	N. 52.91° E.
10	100.00	30.00	31.42	15.71	31.85	N. 52.91° E.
11	100.00	30.00	31.42	15.71	31.85	N. 52.91° E.
12	100.00	30.00	31.42	15.71	31.85	N. 52.91° E.
13	100.00	30.00	31.42	15.71	31.85	N. 52.91° E.
14	100.00	30.00	31.42	15.71	31.85	N. 52.91° E.
15	100.00	30.00	31.42	15.71	31.85	N. 52.91° E.
16	100.00	30.00	31.42	15.71	31.85	N. 52.91° E.
17	100.00	30.00	31.42	15.71	31.85	N. 52.91° E.
18	100.00	30.00	31.42	15.71	31.85	N. 52.91° E.
19	100.00	30.00	31.42	15.71	31.85	N. 52.91° E.
20	100.00	30.00	31.42	15.71	31.85	N. 52.91° E.
21	100.00	30.00	31.42	15.71	31.85	N. 52.91° E.
22	100.00	30.00	31.42	15.71	31.85	N. 52.91° E.
23	100.00	30.00	31.42	15.71	31.85	N. 52.91° E.
24	100.00	30.00	31.42	15.71	31.85	N. 52.91° E.
25	100.00	30.00	31.42	15.71	31.85	N. 52.91° E.
26	100.00	30.00	31.42	15.71	31.85	N. 52.91° E.
27	100.00	30.00	31.42	15.71	31.85	N. 52.91° E.
28	100.00	30.00	31.42	15.71	31.85	N. 52.91° E.
29	100.00	30.00	31.42	15.71	31.85	N. 52.91° E.
30	100.00	30.00	31.42	15.71	31.85	N. 52.91° E.
31	100.00	30.00	31.42	15.71	31.85	N. 52.91° E.
32	100.00	30.00	31.42	15.71	31.85	N. 52.91° E.
33	100.00	30.00	31.42	15.71	31.85	N. 52.91° E.
34	100.00	30.00	31.42	15.71	31.85	N. 52.91° E.
35	100.00	30.00	31.42	15.71	31.85	N. 52.91° E.
36	100.00	30.00	31.42	15.71	31.85	N. 52.91° E.
37	100.00	30.00	31.42	15.71	31.85	N. 52.91° E.
38	100.00	30.00	31.42	15.71	31.85	N. 52.91° E.
39	100.00	30.00	31.42	15.71	31.85	N. 52.91° E.
40	100.00	30.00	31.42	15.71	31.85	N. 52.91° E.
41	100.00	30.00	31.42	15.71	31.85	N. 52.91° E.
42	100.00	30.00	31.42	15.71	31.85	N. 52.91° E.
43	100.00	30.00	31.42	15.71	31.85	N. 52.91° E.
44	100.00	30.00	31.42	15.71	31.85	N. 52.91° E.
45	100.00	30.00	31.42	15.71	31.85	N. 52.91° E.
46	100.00	30.00	31.42	15.71	31.85	N. 52.91° E.
47	100.00	30.00	31.42	15.71	31.85	N. 52.91° E.
48	100.00	30.00	31.42	15.71	31.85	N. 52.91° E.
49	100.00	30.00	31.42	15.71	31.85	N. 52.91° E.
50	100.00	30.00	31.42	15.71	31.85	N. 52.91° E.
51	100.00	30.00	31.42	15.71	31.85	N. 52.91° E.
52	100.00	30.00	31.42	15.71	31.85	N. 52.91° E.
53	100.00	30.00	31.42	15.71	31.85	N. 52.91° E.
54	100.00	30.00	31.42	15.71	31.85	N. 52.91° E.
55	100.00	30.00	31.42	15.71	31.85	N. 52.91° E.
56	100.00	30.00	31.42	15.71	31.85	N. 52.91° E.
57	100.00	30.00	31.42	15.71	31.85	N. 52.91° E.
58	100.00	30.00	31.42	15.71	31.85	N. 52.91° E.
59	100.00	30.00	31.42	15.71	31.85	N. 52.91° E.
60	100.00	30.00	31.42	15.71	31.85	N. 52.91° E.
61	100.00	30.00	31.42	15.71	31.85	N. 52.91° E.
62	100.00	30.00	31.42	15.71	31.85	N. 52.91° E.
63	100.00	30.00	31.42	15.71	31.85	N. 52.91° E.
64	100.00	30.00	31.42	15.71	31.85	N. 52.91° E.
65	100.00	30.00	31.42	15.71	31.85	N. 52.91° E.
66	100.00	30.00	31.42	15.71	31.85	N. 52.91° E.
67	100.00	30.00	31.42	15.71	31.85	N. 52.91° E.
68	100.00	30.00	31.42	15.71	31.85	N. 52.91° E.
69	100.00	30.00	31.42	15.71	31.85	N. 52.91° E.
70	100.00	30.00	31.42	15.71	31.85	N. 52.91° E.
71	100.00	30.00	31.42	15.71	31.85	N. 52.91° E.
72	100.00	30.00	31.42	15.71	31.85	N. 52.91° E.
73	100.00	30.00	31.42	15.71	31.85	N. 52.91° E.
74	100.00	30.00	31.42	15.71	31.85	N. 52.91° E.
75	100.00	30.00	31.42	15.71	31.85	N. 52.91° E.
76	100.00	30.00	31.42	15.71	31.85	N. 52.91° E.
77	100.00	30.00	31.42	15.71	31.85	N. 52.91° E.
78	100.00	30.00	31.42	15.71	31.85	N. 52.91° E.
79	100.00	30.00	31.42	15.71	31.85	N. 52.91° E.
80	100.00	30.00	31.42	15.71	31.85	N. 52.91° E.
81	100.00	30.00	31.42	15.71	31.85	N. 52.91° E.
82	100.00	30.00	31.42	15.71	31.85	N. 52.91° E.
83	100.00	30.00	31.42	15.71	31.85	N. 52.91° E.
84	100.00	30.00	31.42	15.71	31.85	N. 52.91° E.
85	100.00	30.00	31.42	15.71	31.85	N. 52.91° E.
86	100.00	30.00	31.42	15.71	31.85	N. 52.91° E.
87	100.00	30.00	31.42	15.71	31.85	N. 52.91° E.
88	100.00	30.00	31.42	15.71	31.85	N. 52.91° E.
89	100.00	30.00	31.42	15.71	31.85	N. 52.91° E.
90	100.00	30.00	31.42	15.71	31.85	N. 52.91° E.
91	100.00	30.00	31.42	15.71	31.85	N. 52.91° E.
92	100.00	30.00	31.42	15.71	31.85	N. 52.91° E.
93	100.00	30.00	31.42	15.71	31.85	N. 52.91° E.
94	100.00	30.00	31.42	15.71	31.85	N. 52.91° E.
95	100.00	30.00	31.42	15.71	31.85	N. 52.91° E.
96	100.00	30.00	31.42	15.71	31.85	N. 52.91° E.
97	100.00	30.00	31.42	15.71	31.85	N. 52.91° E.
98	100.00	30.00	31.42	15.71	31.85	N. 52.91° E.
99	100.00	30.00	31.42	15.71	31.85	N. 52.91° E.
100	100.00	30.00	31.42	15.71	31.85	N. 52.91° E.



APPROVED: *Mark L. 1952*  
 MARYLAND NATIONAL CAPITAL PARK & PLANNING COMMISSION

APPROVED: *Mark L. 1952*  
 WASHINGTON SUBURBAN SANITARY COMMISSION

APPROVED: *Mark L. 1952*  
 WITHOUT CONFLICT WITH ANY OTHER RECORDS

NOTE:  
 Lots 12, 13 and 14, Block G-1-A have been shown in dimensions given for original lots 2, 3 and 4.

PRINCE GEORGES COUNTY, MARYLAND  
 SCALE: 1" = 100'  
 MARCH, 1952

BEN DYER  
 REGISTERED CIVIL ENGINEER  
 AND LAND SURVEYOR  
 HYMTTSVILLE, MD.

**BLOCK 59-A AND PARTS OF BLOCKS 60-A, 61-A, 62, 70-A AND 72A HOLLYWOOD AND THE ADDITION TO DANIELS PARK COLLEGE PARK**

ENGINEERS CERTIFICATE

I hereby certify that the above shown hereon is correct. That it is a subdivision of the following:

(1) All of Lots 5 to 9, both inclusive, in Block 59-A, Lot 7 in Block 70-A, Parcel 7 in Block 72, Hollywood on parcel recorded in Plat Book WYV-18 of folio 84 and lot 38 in Block 5-A, The Addition to Daniels Park, as per plat recorded in Plat Book WYV-20 of folio 33 and lot having been among the lands conveyed by the following: (a) Esda Mendenhall, widow, to Burch Properties, Inc. by deed dated June 21, 1949 and recorded June 23, 1949 in Liber 1195 of folio 255, and (b) Andrew A. Matherland and Alice V. Matherland, his wife, to Burch Properties, Inc. by deed dated January 5, 1952 and recorded January 9, 1952 in Liber 1251 of folio 315.

(2) All of Lots 1 to 4, both inclusive, in Block 59-A, Lots 0 to 18, both inclusive, in Block 60-A, Lots 2, 3 and 4 in Block 61-A, Lots 47 to 54, both inclusive, in Block 62, Lots 1 and 8 to 17, both inclusive, in Block 70-A and Lots 1 to 9, both inclusive, in Block 71-A, Hollywood, as per plat recorded in Plat Book WYV-18 of folio 84, said plat being carried by Burch Properties, Inc. Maryland Corporation, to Lester M. Lewis, by deed dated December 17, 1951 and recorded December 23, 1951 in Liber 1248 of folio 413.

(3) All of the acres shown in the subdivision of Kenesaw Terrace by (a) all of Lots 21 to 28, both inclusive, in Block 5, The Addition to Daniels Park, as per plat recorded in Plat Book BGS-1 of folio 24, said plat having been conveyed by Catherine Smith unmarried, to James T. Harmon and Mrs. J. Harmon, his wife, by deed dated March 21, 1949 and recorded March 22, 1949 in Liber 1108 of folio 310.

All references made being to the Land Records of Prince Georges County, Maryland, and that stones indicated thus: "s" and iron pipes indicated thus: "o" are in place as shown.

April 22, 1952

*Ben Dyer*  
 Registered Professional Engineer  
 AND LAND SURVEYOR  
 HMTTSVILLE, MD.

1 2 3 4 5 6

209